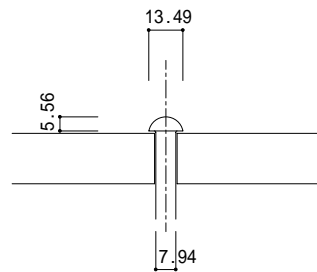
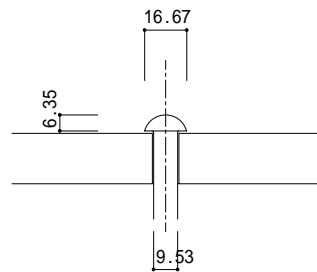


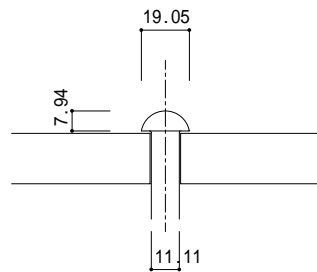
型吋 : 1/4  
D 吋 : 7/16  
H 吋 : 11/64



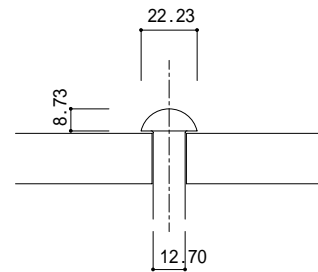
型吋 : 5/16  
D 吋 : 17/32  
H 吋 : 7/32



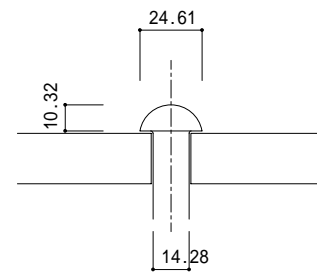
型吋 : 3/8  
D 吋 : 21/32  
H 吋 : 1/4



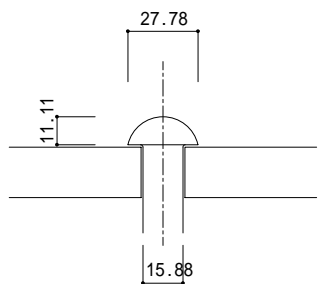
型吋 : 7/16  
D 吋 : 3/4  
H 吋 : 5/16



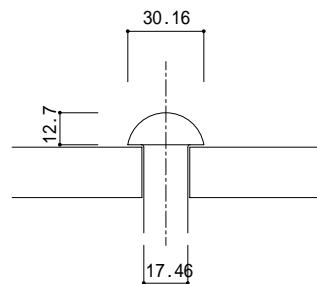
型吋 : 1/2  
D 吋 : 7/8  
H 吋 : 11/32



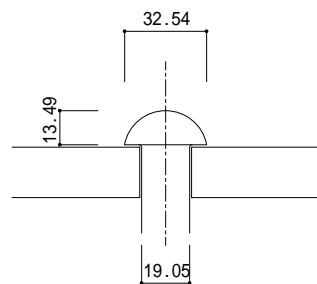
型吋 : 9/16  
D 吋 : 31/32  
H 吋 : 13/32



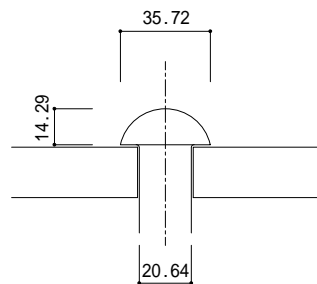
型吋 : 5/8  
D 吋 : 1-3/32  
H 吋 : 7/16



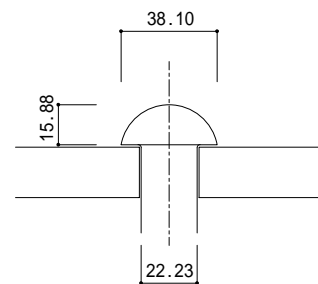
型吋 : 11/16  
D 吋 : 1-3/16  
H 吋 : 1/2



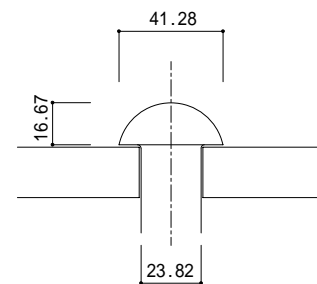
型吋 : 3/4  
D 吋 : 1-9/32  
H 吋 : 17/32



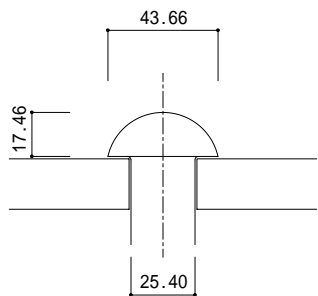
型吋 : 13/16  
D 吋 : 1-13/32  
H 吋 : 9/16



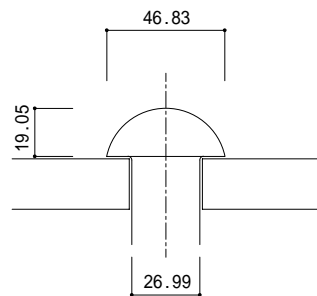
型吋 : 7/8  
D 吋 : 1-1/2  
H 吋 : 5/8



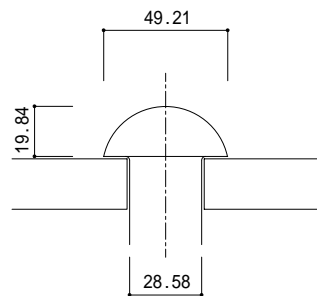
型吋 : 15/16  
D 吋 : 1-5/8  
H 吋 : 21/32



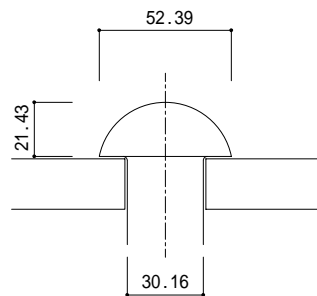
型吋 : 1  
D 吋 : 1-23/32  
H 吋 : 11/16



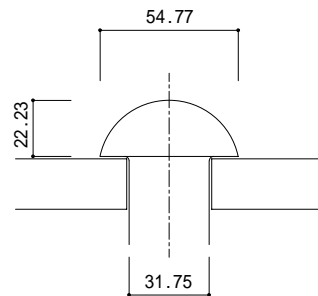
型吋 : 1-1/16  
D 吋 : 1-27/32  
H 吋 : 3/4



型吋 : 1-1/8  
D 吋 : 1-15/16  
H 吋 : 25/32



型吋 : 1-3/16  
D 吋 : 2-1/16  
H 吋 : 27/32



型吋 : 1-1/4  
D 吋 : 2-5/32  
H 吋 : 7/8

### 丸リベット製品断面

製品目録(大正14年版)より

lbs : 1feetあたりの重量

1feet = 12inch = 304.8mm

1pound = 0.45359237kg