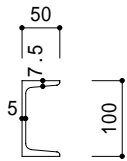
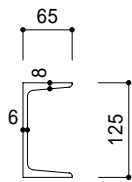


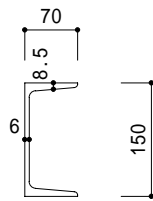
75 × 40 × 5 × 7
(6.92kg/m)



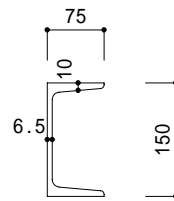
100 × 50 × 5 × 7.5
(9.36kg/m)



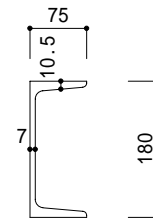
125 × 65 × 6 × 8
(13.4kg/m)



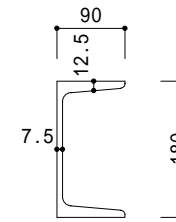
150 × 70 × 6 × 8.5
(15.8kg/m)



150 × 75 × 6.5 × 10
(18.6kg/m)



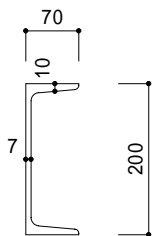
180 × 75 × 7 × 10.5
(21.3kg/m)



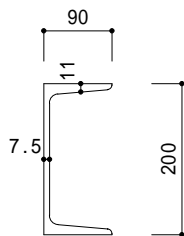
180 × 90 × 7.5 × 12.5
(27.1kg/m)

溝形鋼 断面

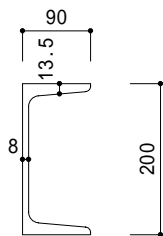
日本標準規格 より
大正14年3月27日決定
日本工業規格(JIS)の前規格



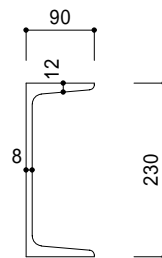
200 × 70 × 7 × 10
(21.1kg/m)



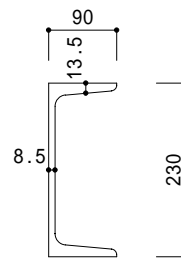
200 × 90 × 7.5 × 11
(24.6kg/m)



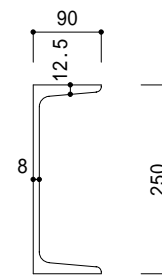
200 × 90 × 8 × 13.5
(30.3kg/m)



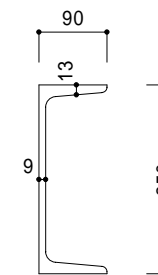
230 × 80 × 8 × 12
(28.4kg/m)



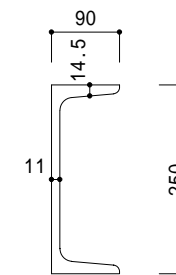
230 × 90 × 8.5 × 13.5
(33.1kg/m)



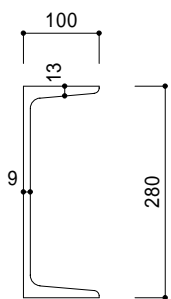
250 × 90 × 8 × 12.5
(30.2kg/m)



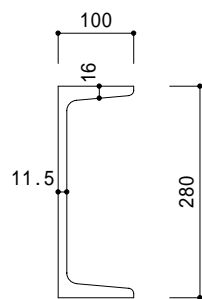
250 × 90 × 9 × 13
(34.7kg/m)



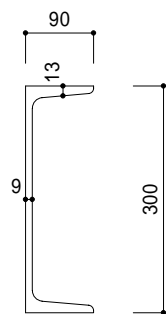
250 × 90 × 11 × 14.5
(40.2kg/m)



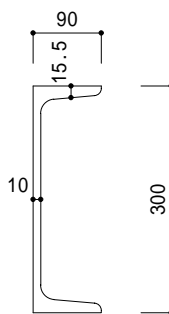
280 × 100 × 9 × 13
(38.8kg/m)



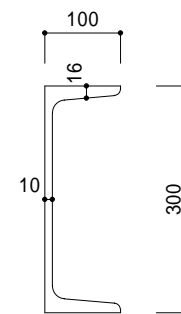
280 × 100 × 11.5 × 16
(48.2kg/m)



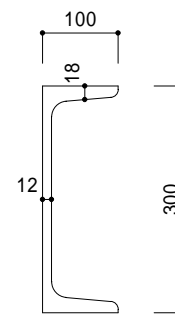
300 × 90 × 9 × 13
(38.1kg/m)



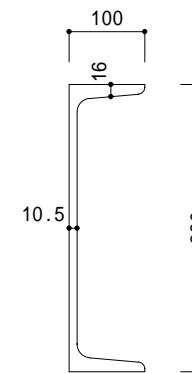
300 × 90 × 10 × 15.5
(43.8kg/m)



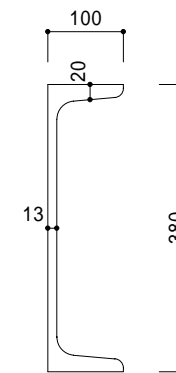
300 × 100 × 10 × 16
(46.8kg/m)



300 × 100 × 12 × 18
(46.8kg/m)



380 × 100 × 10.5 × 16
(54.5kg/m)



380 × 100 × 13 × 20
(67.3kg/m)