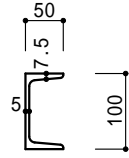
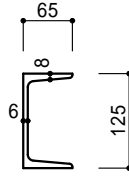


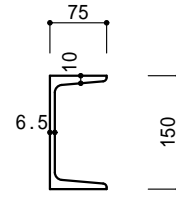
75 × 40 × 5 × 7  
(6.92kg/m)



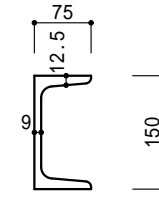
100 × 50 × 5 × 7.5  
(9.36kg/m)



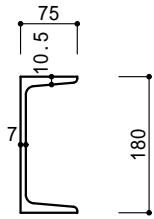
125 × 65 × 6 × 8  
(13.4kg/m)



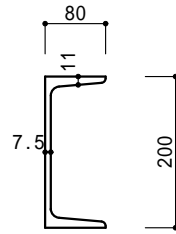
150 × 75 × 6.5 × 10  
(18.6kg/m)



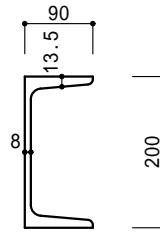
150 × 75 × 9 × 12.5  
(24.0kg/m)



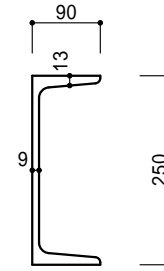
180 × 75 × 7 × 10.5  
(21.4kg/m)



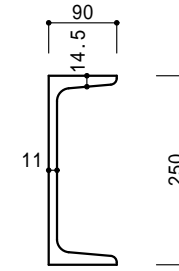
200 × 80 × 7.5 × 11  
(24.6kg/m)



200 × 90 × 8 × 13.5  
(30.3kg/m)



250 × 90 × 9 × 13  
(34.6kg/m)

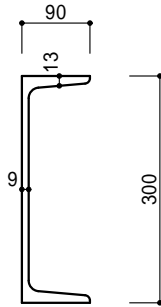


250 × 90 × 11 × 14.5  
(40.2kg/m)

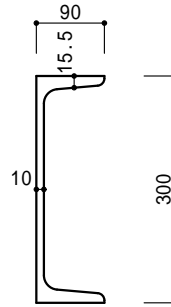
### 溝型鋼標準断面

JIS G3192 より  
( )は単位質量

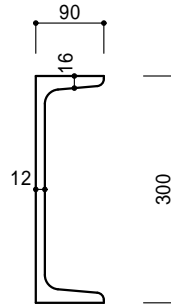
2003/05/21  
奥井淳司



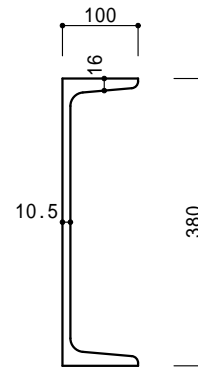
300 × 90 × 9 × 13  
(38.1kg/m)



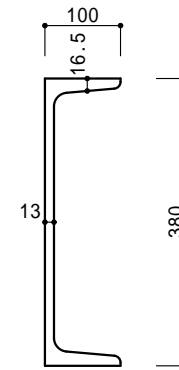
300 × 90 × 10 × 15.5  
(43.8kg/m)



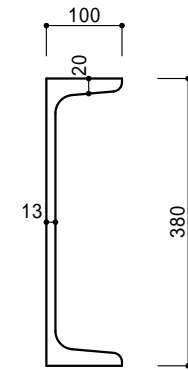
300 × 90 × 12 × 16  
(48.6kg/m)



380 × 100 × 10.5 × 16  
(54.5kg/m)



380 × 100 × 13 × 16.5  
(62.0kg/m)



380 × 100 × 13 × 20  
(67.3kg/m)